

HOMETOWNE AT MATADOR RANCH

Visit Us At

HomeTowneAtMatadorRanch.com



HomeTowne at Matador Ranch offers a lifestyle full of new friendships, activity and peace of mind.

The overall design of the community creates a sense of small town village charm where our residents can take advantage of living in our architecturally stylish three-story building design with elevator service and attached clubhouse.

Come out for a visit today!

COMMUNITY AMENITIES

On the Fort Worth "T" Bus Line
Gated Community
Detached Garages Available**
Resident Game Room & Lounge
Fitness Center Designed for Active Seniors
Clubhouse with Beauty Salon, Media Library &
Dining Areas
Resort Style Pool with Sun Deck & Large Covered Veranda
Three-Story Building Design with Elevator Service
Individual Interior Storage Closets**
Limited Access Remote Entry Gates
Style Savvy Clubhouse with Chic Decor

FLOOR PLAN TYPES

1 Bed / 1 Bath 694 - 829 Sq. Ft.
2 Bed / 2 Bath 932 Sq. Ft.

*Available in select homes

INTERIORS

Spacious 1 & 2 Bedroom Floor Plans
Handicapped Accessible Units*
Garden Style Plans
GE Appliance Package Including
Refrigerator with Ice maker
Kitchen Island*
Large Closets
Patio*
Outside Storage*
Full Size Washer/Dryer Connections
Cable TV & Internet Ready



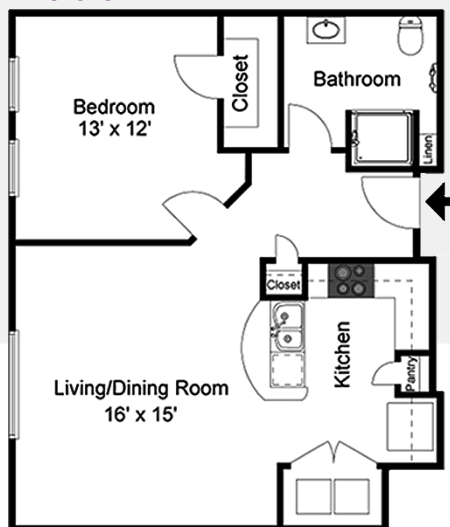
8500 Crowley Road, Fort Worth, TX 76134

(817) 568-9595



FLOOR PLAN TYPES

Arabian



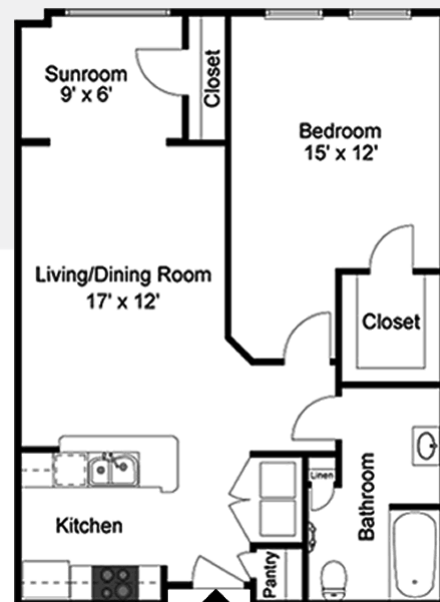
1 Bed / 1 Bath 694 Sq. Ft.*

Paso Fino



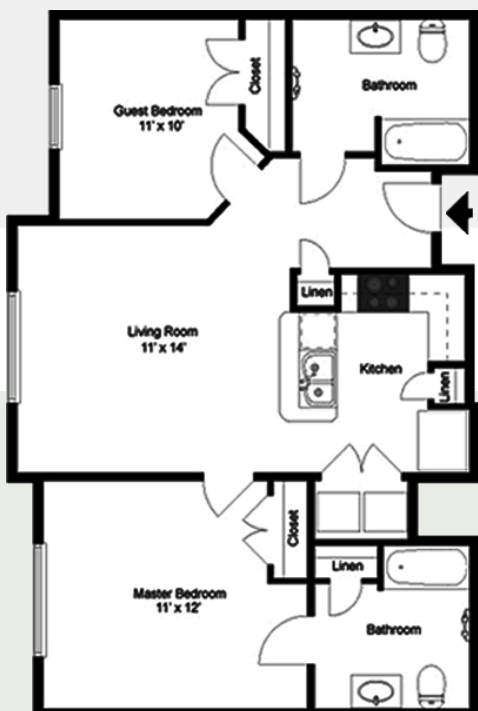
1 Bed / 1 Bath 794 Sq. Ft.*

Belgian



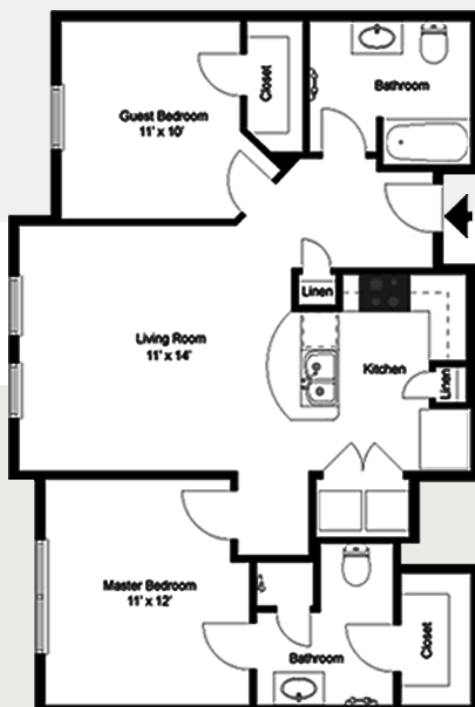
1 Bed / 1 Bath / Sunroom 829 Sq. Ft.*

Palomino



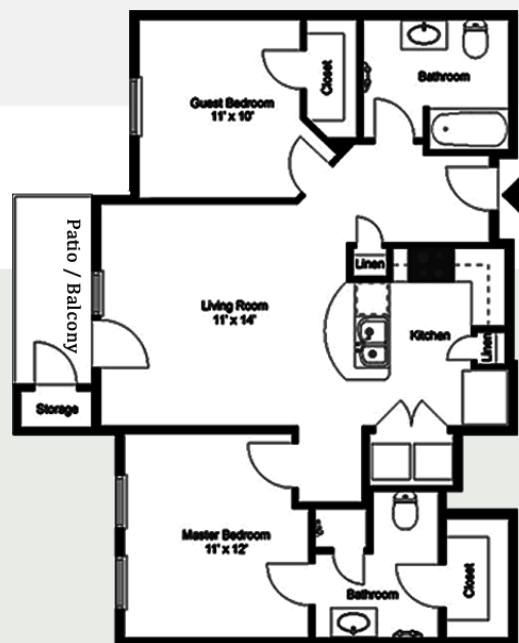
2 Bed / 2 Bath 932 Sq. Ft.*

Mustang



2 Bed / 2 Bath 932 Sq. Ft.*

Appaloosa



2 Bed / 2 Bath 932 Sq. Ft.*